

Swiss Olympic House/Seehaus





Locali per seminari e gruppi



Erlach



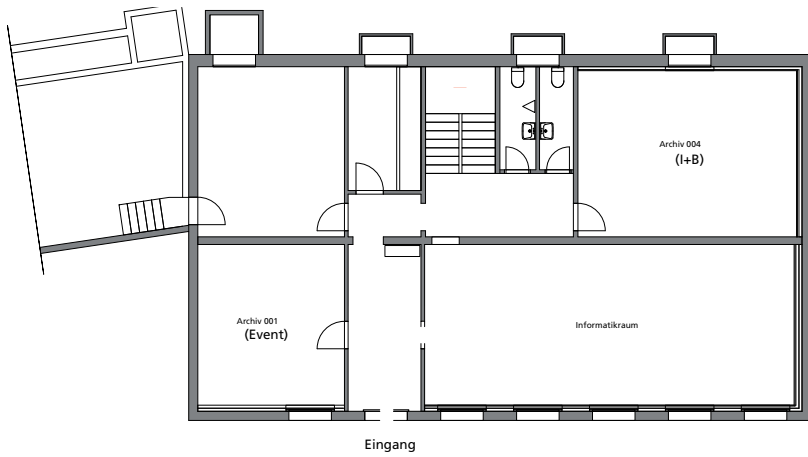
Twann

Locale	Disposizione delle sedi				
	m ²	Ferro di cavallo 	Seminario 	Teatro 	Tavolo unico 
Seehaus sotterraneo		Numero partecipanti	Numero partecipanti	Numero partecipanti	Numero partecipanti
Informatica	63	x x x	25*	x x x	x x x
* 13 computer					
Seehaus 1° piano					
Erlach	81	22	30	50	28
Club-Lounge	41	12	x x x	x x x	16
Twann	26	8	8	x x x	x x x
Seehaus 2° piano					
Biel / Bienne	84	22	30	50	28
Tüscherz	55	16	22	30	20
Ligerz	42	14	12	24	16

Tutti i locali per i seminari sono dotati di beamer, schermo, flipchart, lavagna magnetica e valigetta per il relatore e dispongono di accesso gratuito a internet.

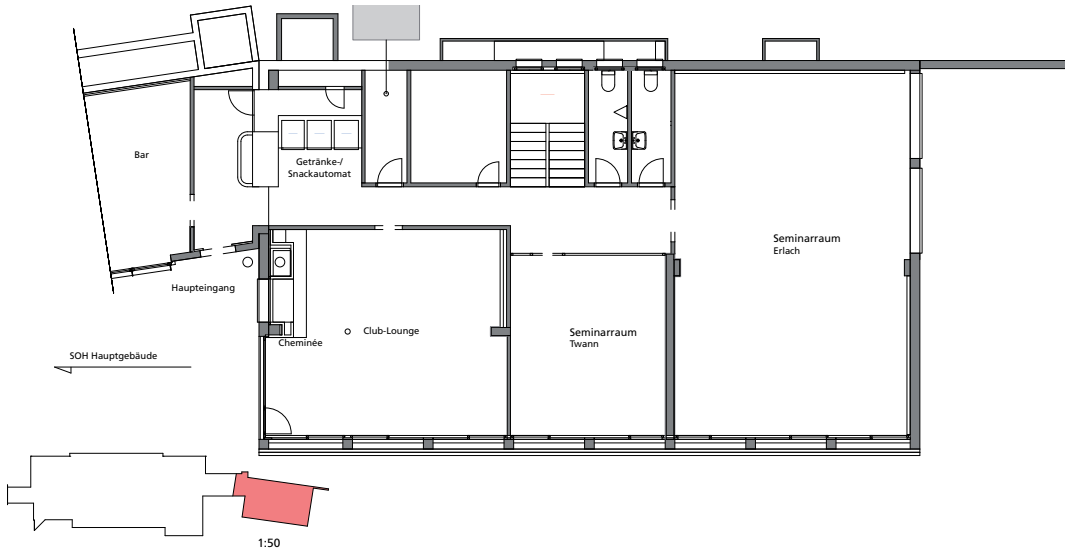


Seehaus sotterraneo



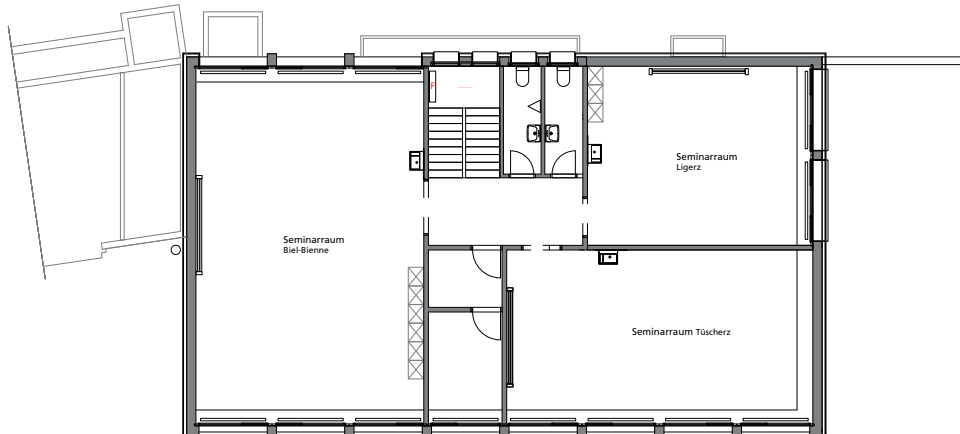
1:50

Seehaus 1° piano



1:50

Seehaus 2° piano



1:50